



**BMH TECHNOLOGY**

# COMPANY PRESENTATION

Renewable future together.

18/3/25

# CONTENT

<b>3</b>	Our mission	<b>12</b>	Our customers and solutions
<b>4</b>	Our vision	<b>13</b>	Our business
<b>6</b>	BMH 2023	<b>14</b>	Waste processing
<b>7</b>	BMH Group	<b>15</b>	Biomass handling
<b>8</b>	Our history	<b>16</b>	Shredders & Crushers
<b>9</b>	Our values	<b>17</b>	Life Cycle Services
<b>10</b>	Sustainability	<b>18</b>	Our references
<b>11</b>	Why choose BMH?		

# Our mission



BMH designs and builds solutions for material recovery, renewable energy and recreation of raw materials.

We are an integral part of building greener and cleaner future globally.

We work closely together with our customers and support them all the way in achieving their targets.



# Our vision



BMH has the technology for reusing municipal, industrial, commercial and wood-based waste.

We create solutions for waste to be reborn as raw materials and renewable energy.



Solutions for waste to be reborn as raw materials and renewable energy.







# BMH 2024



Personnel

~180



CEO

Mikko Osara



QHSE

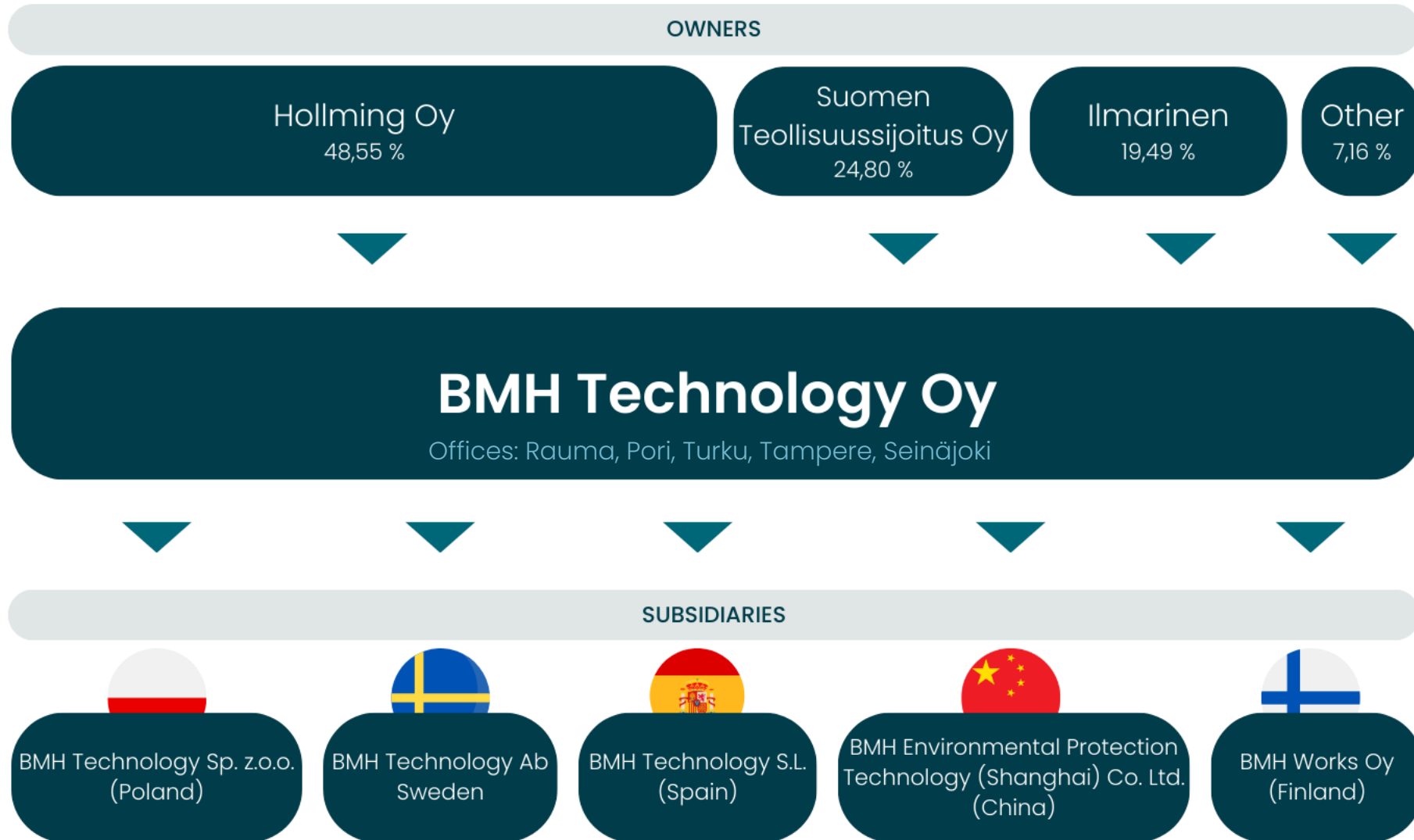
ISO 9001 | ISO 14001 | ISO 45001



Turnover

49 MEUR (2023)

# BMH Group



# Over 90 years of history in material handling



**2020**  
The first **Waste to Chemicals plant** was sold.



**2005**  
The first **complete solid recovered fuel (SRF) line** was delivered.



**2003**  
The first **TYRANNOSAURUS® shredder** was delivered.



**1961**  
The first large **wood chip handling system** was delivered.



**1947**  
The first **conveyor** was manufactured.

 **BMH TECHNOLOGY** 2010

**BMH Technology** 2007

**BMH Wood Technology** 1994

*Consilium Bulk Babcock* 1992

 **Lönström Oy** 1971

 **AMMUS-SYTTYIN OY** 1959

 **AMMUS** 1936

 **Osakeyhtiö Sytytin** 1929





# Our values



We build genuine trust with our customers and work in **co-operation** to achieve shared goals.



We deliver excellent performance by bringing **passion** and dedication into everything we do.



We prioritize actions that create value, **success** and sustainable development for both us and our customers.

# Sustainability

Our scope 1&2 emissions

**370**

tons of CO<sub>2</sub> equivalent\*  
(2022)

For 2025, we target

**-40%**

(ref. year 2019)



We develop our business to follow the Circular Economy principles and enhance sustainability in our operations.

People are our priority in everything we do. We invest in everyone's well-being and safety.

Together with our network, we create not only local, financial and technological success, but also sustainable global development.

# Why choose BMH?



## COMPLETE SOLUTIONS

Complete and reliable process solutions for high capacity solid waste and biomass handling systems with own key equipment.



## EXECUTION CAPABILITY

Complete turnkey process execution capability with experienced personnel and supported by a partner network.



## STRONG REFERENCES

A large number of reference plants and satisfied customers around the world.



## LOCAL SERVICE

Strong local service in selected markets.



# Our customers and solutions

## RECYCLING AND WASTE MANAGEMENT COMPANIES



WASTE REFINING  
AND MATERIAL  
RECYCLING SYSTEMS

## HEAT AND POWER PLANTS



WASTE PROCESSING AND  
SRF/RDF HANDLING SYSTEMS  
BIOMASS HANDLING SYSTEMS

## PULP AND PAPER MILLS



SERVICES FOR WOOD CHIP  
AND BIOMASS HANDLING  
SYSTEMS

## CHEMICAL PRODUCTION PLANTS



FEEDSTOCK SYSTEMS  
FOR CHEMICAL  
RECYCLING PLANTS

## CEMENT PLANTS



SOLID RECOVERED FUEL  
(SRF) HANDLING  
SYSTEMS

## EQUIPMENT

Receiving- Shredders & Crushers - Separation - Storage - Conveying

## LIFE CYCLE SERVICES

Spares - Service Agreements - Maintenance - Modernisation

# Our businesses

## WASTE PROCESSING



## BIOMASS HANDLING



## SHREDDERS & CRUSHERS



## LIFE CYCLE SERVICES



✓ More than 70 delivered plants.

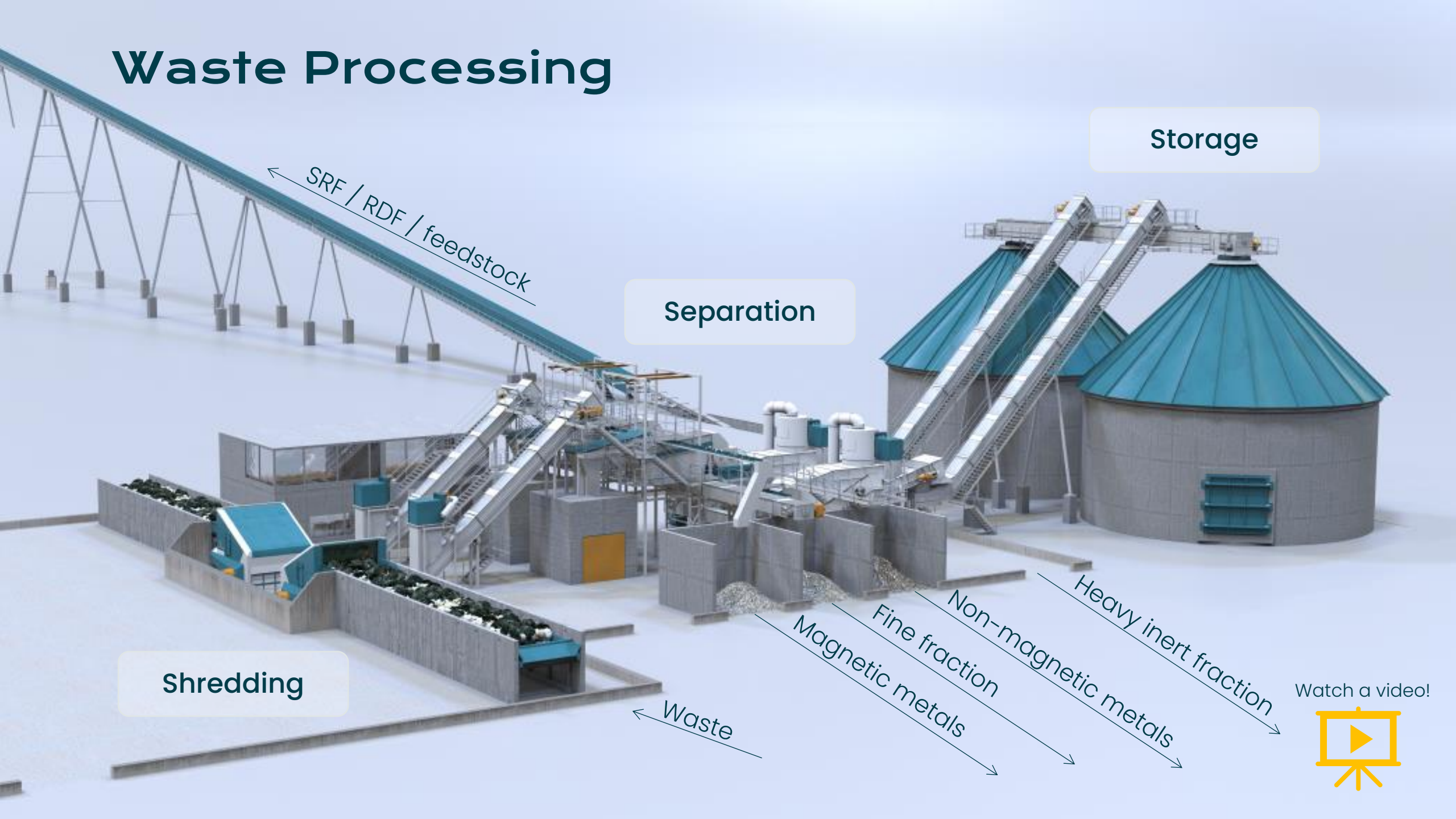
✓ More than 200 delivered plants.

✓ More than 270 delivered shredders and crushers.

✓ Hundreds of satisfied customers using BMH maintenance services regularly.



# Waste Processing



Storage

Separation

Shredding

SRF / RDF / feedstock

Waste

Magnetic metals

Fine fraction

Non-magnetic metals

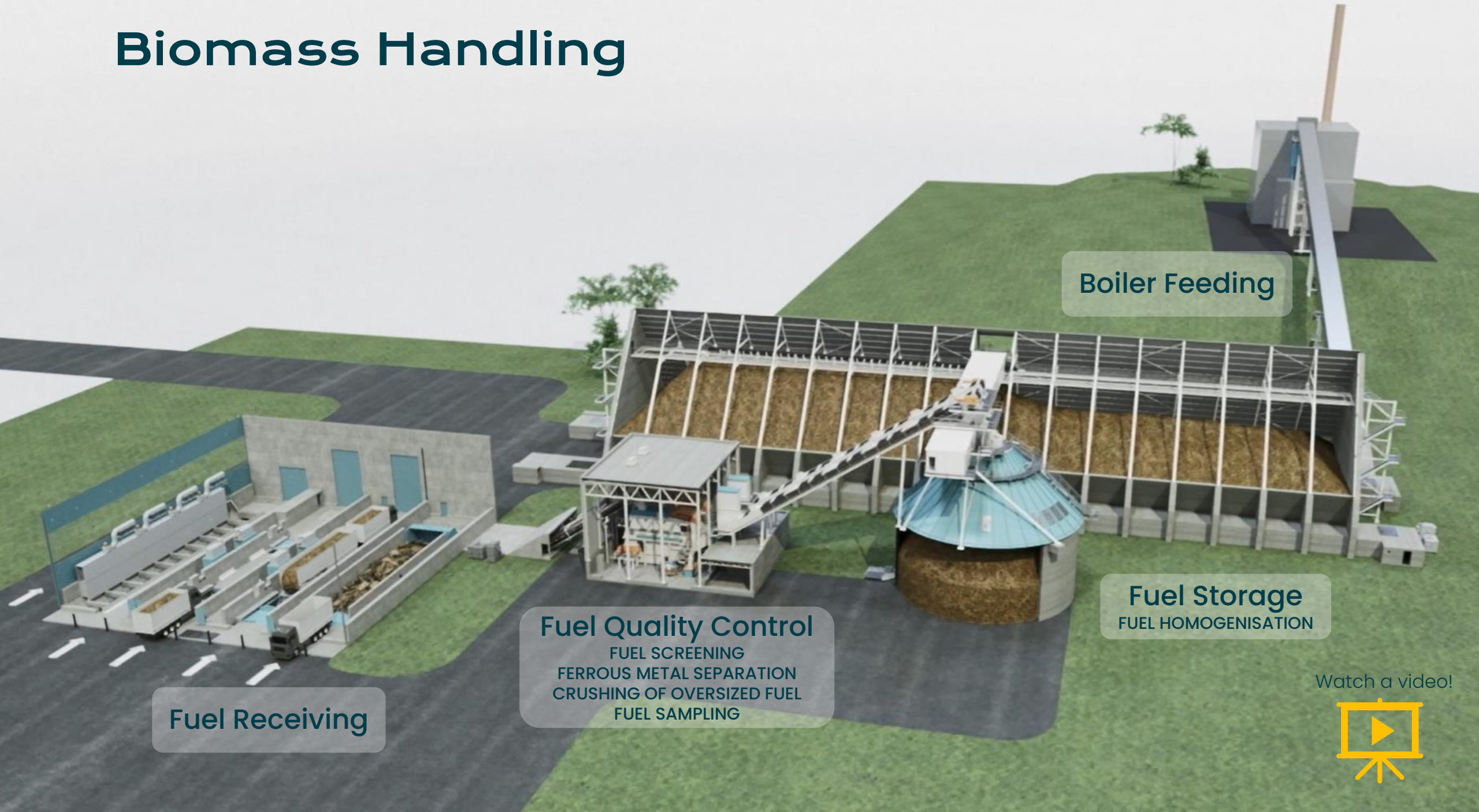
Heavy inert fraction

Watch a video!





# Biomass Handling



Fuel Receiving

Fuel Quality Control

FUEL SCREENING  
FERROUS METAL SEPARATION  
CRUSHING OF OVERSIZED FUEL  
FUEL SAMPLING

Boiler Feeding

Fuel Storage  
FUEL HOMOGENISATION

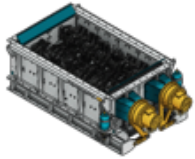
Watch a video!



# TYRANNOSAURUS® Shredders

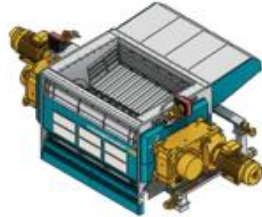
## T660X

Pre-shredder  
for MSW & ICW



## T770X

Main shredder  
for ICW & MSW



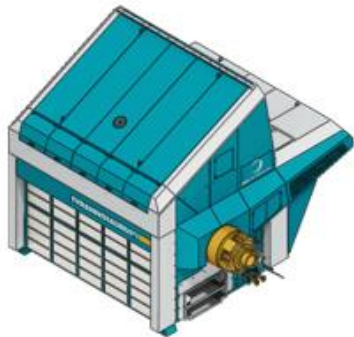
## T880X

Main shredder  
for MSW & ICW



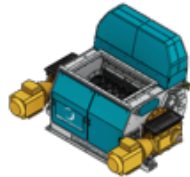
## T990X

Main shredder  
for ICW & MSW



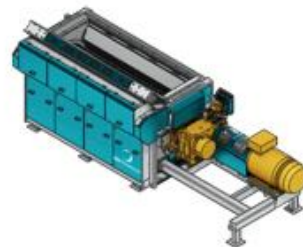
## T750X

Post-screening  
over-size shredder  
for ICW & MSW



## T120X

Fine shredder for  
sorted and  
pretreated waste



MSW = Municipal Solid Waste

# TYRANNOSAURUS® Crushers

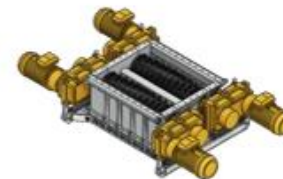
## T902X

Main crusher  
for wood-based biomass



## T65XX

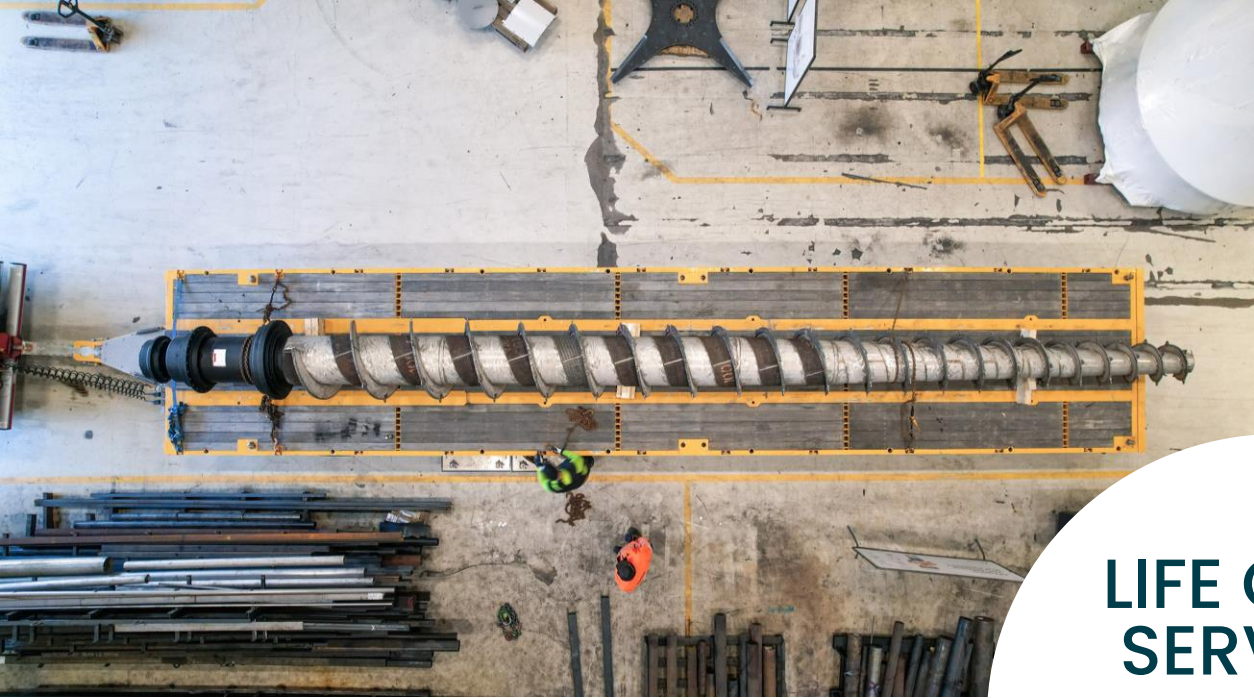
Post-screening over-size crusher  
for wood-based biomass



ICW = Industrial and Commercial Waste

More than  
**270**  
stationary  
shredders  
and crushers  
delivered  
since 1980.





## LIFE CYCLE SERVICES

- Spares
- Service Agreements
- Maintenance
- Modernisation







● TYRANNOSAURUS® Waste Refining Plant

▲ Solid Biomass Handling Plant

**Renewable  
future  
together.**

---



**BMH TECHNOLOGY**

**bmh.fi**